

## Upaya Perawat Dalam Meningkatkan Mutu Asuhan Keperawatan Pada Pandemi Covid-19 melalui Kolaborasi Interprofesi di Rumah Sakit

**Ns. Ahmad Rifai, M.S.**

**Fakultas Keperawatan, Universitas Jember  
2020**

# Session objectives



Review Kolaborasi Interprofesi



Kolaborasi interprofesi dalam meningkatkan mutu asuhan keperawatan



Pentingnya kolaborasi interprofesi dalam perawatan Pasien Covid 19

# Do you know them?

A Nurse

A Doctor



A Patient

# Kolaborasi Interprofesi



- **Interprofessional Collaborative Practice :**  
*Working in partnership between professions and / or between organization with individuals, families, groups and communities (CAIPE, 2013)*

# What is IPE-IPC?

## Interprofessional Education

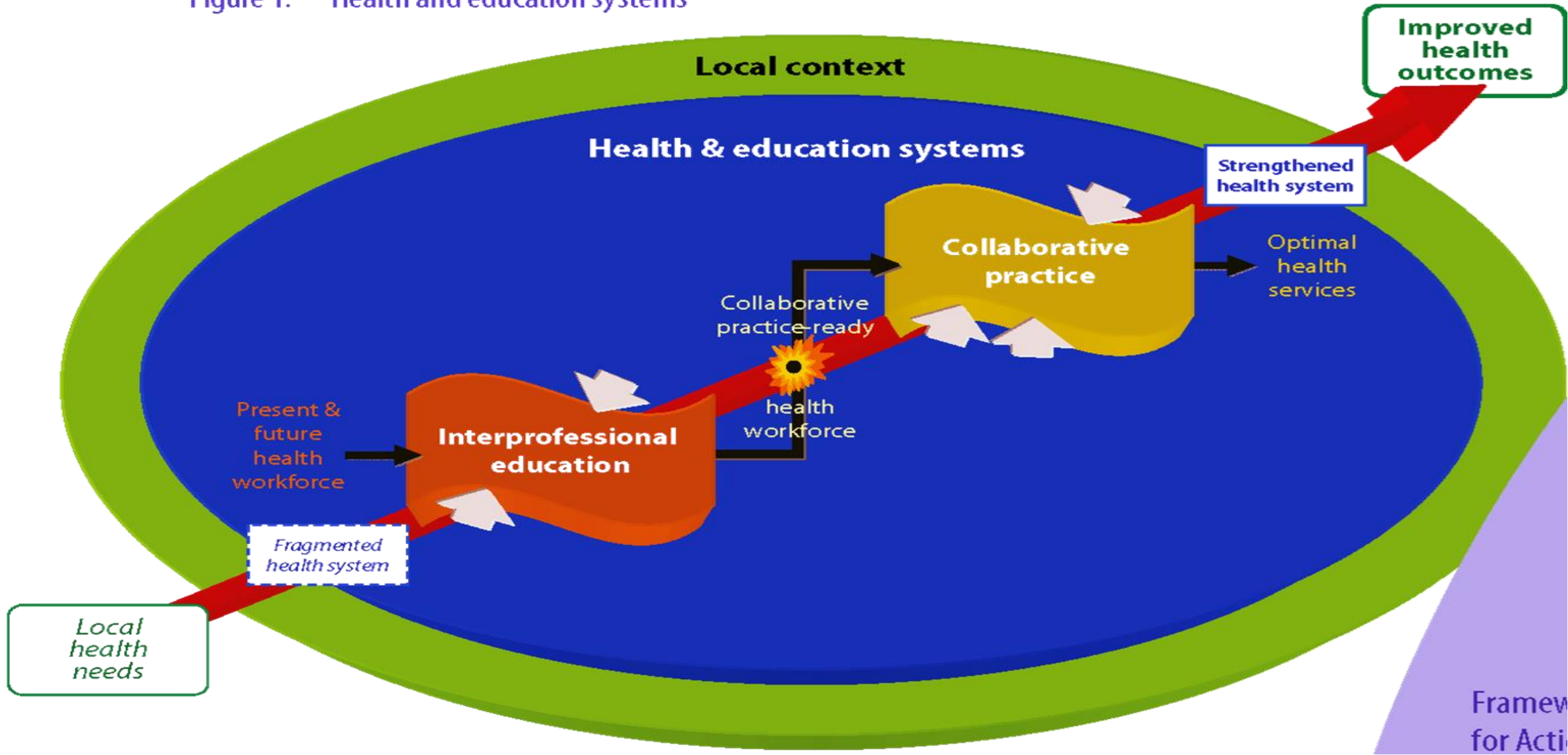
Interprofessional Education occurs when *two or more* learn about, from, and with each other to enable *effective collaboration and improve health outcomes*.

## Collaborative Practice

When *multiple* health workers from *different professional* backgrounds provide comprehensive services by working with patients, their families, care givers and communities to deliver the *highest quality of care* across settings



Figure 1. Health and education systems



WHO, Framework for Action on Interprofessional Education and Collaborative Practice, 2010; Core Competencies for Interprofessional Collaborative Practice, 2011



# Nurse Position



**DEWAN PENGURUS PUSAT  
PERSATUAN PERAWAT NASIONAL INDONESIA  
(INDONESIAN NATIONAL NURSES ASSOCIATION)**

Address: Jl. Raya Lenteng Agung No. 64 Rt 006 Rw 008, Lenteng Agung, Jagakarsa, Jakarta Selatan - 12610  
Phone : 021-2271-0272, Fax : 021-2271-4959 E-Mail: [dpp@ppni-inna.org](mailto:dpp@ppni-inna.org)  
[www.ppni-inna.org](http://www.ppni-inna.org)



**KEPUTUSAN DEWAN PENGURUS PUSAT  
PERSATUAN PERAWAT NASIONAL INDONESIA  
NOMOR: 038/DPP.PPNI/SK/K.S/III/2020**

**TENTANG**

**TIM PENANGANAN *CORONAVIRUS DISEASE (COVID-19)*  
PERSATUAN PERAWAT NASIONAL INDONESIA  
TAHUN 2020**

- Melakukan **koordinasi** dengan pemerintah dan pihak terkait untuk penanganan COVID-19 termasuk dengan internal PPNI.
- Melakukan **koordinasi dengan pemerintah dan atau organisasi profesi kesehatan lainnya** dalam penanganan COVID-19 agar perawat mendapat perlindungan dalam melakukan asuhan keperawatan.



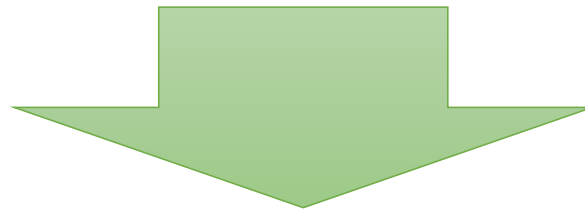
# Core competencies for Collaborative Practice :



- Role clarification
- Team Functioning
- Patient/Client/Family/Community-Centre Care
- Collaborative Leadership
- Interprofessional Communication
- Interpersonal skills
- Interprofessional conflict resolution



# What nurse can do ?



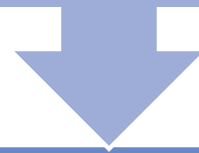
**Peningkatan Mutu Asuhan Keperawatan**

(Slide DR. Rr. Tutik Sri, Zoominar #17 | Manajemen SDM dan Kepemimpinan Caring dalam Pelayanan Keperawatan, tgl 20 Mei 2020)



# Study Findings

IPE is essential to be delivered during academic phase in nursing education; IPE helps students interact and collaborate; IPE requires structured schedule from school; IPC enables student deliver holistic care (Rifai, 2018)



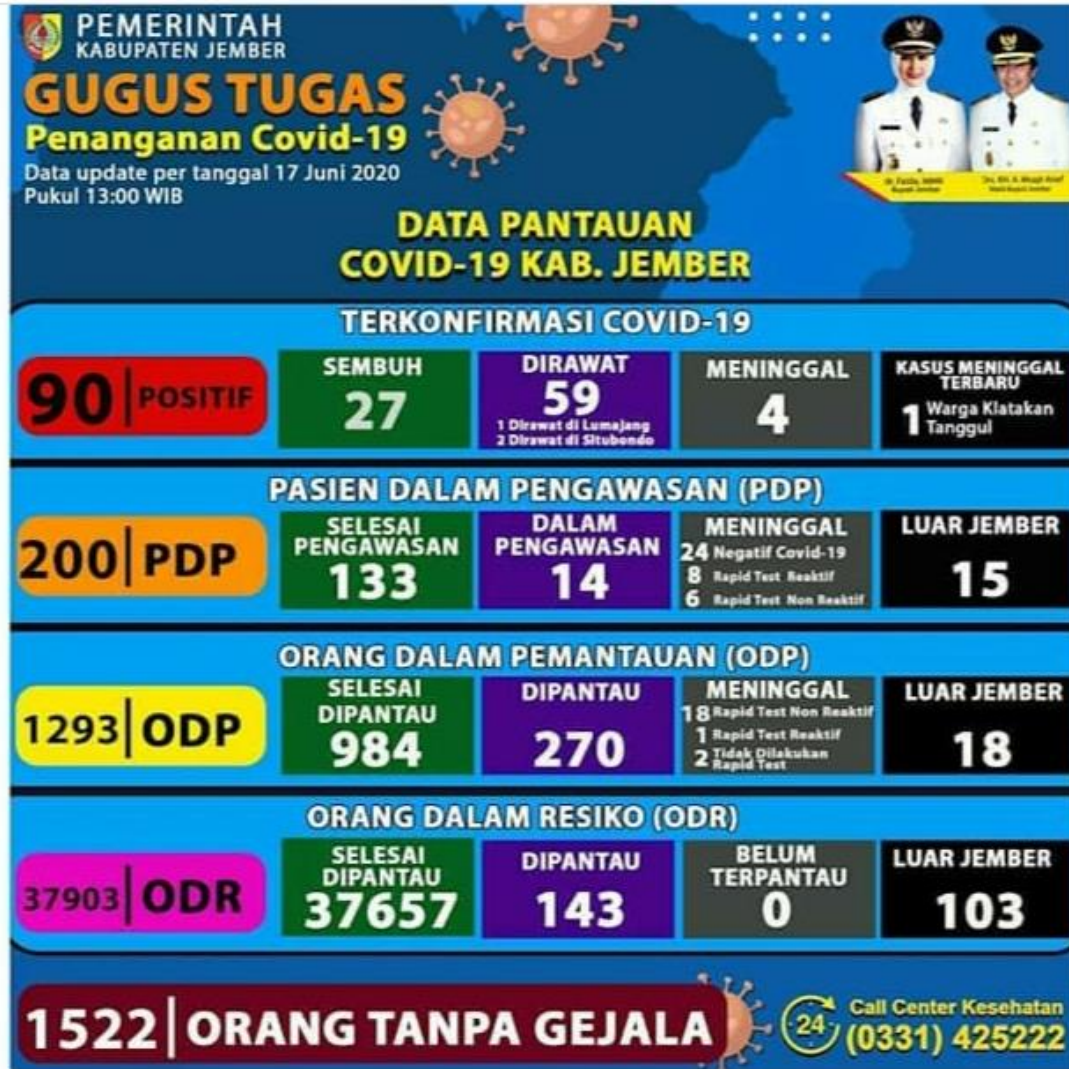
Perawat memiliki sikap kolaborasi interprofesi perawat-dokter yang positif (Utami, Rifai, Purwandari, 2018)



Mahasiswa yang pernah melaksanakan IPE memiliki kesiapan yang lebih tinggi dalam melaksanakan IPC di RS (hadiastuti, Rifai, Afandi, 2019)



# Latest Covid-19 Situation



KEMENKES RI

PERKEMBANGAN

# COVID-19

DI INDONESIA

Update tanggal: 17 Juni 2020, pukul 12.00 WIB

di 34 Provinsi



#LawanCOVID19 #DirumahSaja  
 #JagaJarak #JanganMudik



Cuci tangan pakai sabun dengan air mengalir



Jaga jarak +1,5 meter dengan orang lain



Gunakan masker



Tingkatkan imunitas tubuh kita

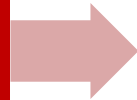


Cari & buka informasi resmi Covid-19  
[covid19.go.id](https://covid19.go.id)  
[covid19.kemkes.go.id](https://covid19.kemkes.go.id)  
 119 ext 9



# Preparing Collaborative Practice Ready Health Care Professionals...

Interprofessional  
Education  
promotes  
collaboration



Collaboration  
enhances  
coordinate care for  
complex  
patients



Coordinated  
care improves  
patient  
outcomes

# Strategi kolaborasi interprofesi dalam menghadapi Covid 19

---

Leadership through supportive management practices

---

Commit to inter-professional collaboration and practices

---

Change the culture of the workplace

---

Change the attitudes of health workers about hierarchical practices

---

Eliminate barriers to collaborative practices by revising and updating appropriate legislation and clinical practice approaches



Terima Kasih

Coming together  
is a **beginning**  
keeping together  
is **progress**  
working together  
is **success.**

Henry Ford

[www.quoteslyfe.com](http://www.quoteslyfe.com)

